

simon (cal 216)

Model Code F1534

revision 05 of 14-04-10 (cancels the previous one)



Designer: CSI

Structure: Pinewood, beech-wood and plywood covered with polyurethane foam.

Spring system: Elastic webbing.

Seat Padding: Environmentally friendly polyurethane foam covered with 100% polyester padding.

Back Padding: Environmentally friendly polyurethane foam covered with 100% polyester padding.

Arm Interior: Environmentally friendly polyurethane foam covered with 100% polyester padding.

Removability: Not removable.

Sewing: The covering in leather can be made with contrast stitching in the available colours. For leather the cuts are different from those of microfiber covering (or fabric).

Standard feet: PM369 matt metal feet 13 cm high. Some components include hidden feet having structural function only.

Optional feet: PM431 chrome and matt emtal feet 13 cm high, PL437 rosewood coloured beech 13 cm high, available upon request in black, cherry, dark walnut, light walnut, silver and natural.

Density of seat and back

Markets	Seat	Back
I	35	30
D - NL - CH	35 hard	30 hard
USA	35 soft	30 soft
GB - California	35 fire retardant soft	30 fire retardant soft
Others	35	30

Coverings

	suggested	not suggested	not possible
thick leathers	✓		
thin elastic leathers	✓		
natural leathers	✓		
fabric	✓		
microfibre	✓		
By Cust			✓
leather + split	✓		
DeLuxe			✓
multicovering			✓
multicolour			✓

Please note: for not removable models, only one colour fabric covers are available.

Ottoman



560

Feet



PM369

PM431

PL437

With the reservation of carrying □ for production purposes and without advanced notices □ modifications on the materials, coverings and dimensions of the product as indicated in the relevant specification. The given dimensions and volume are of indicative value being subject to the production process tolerances.

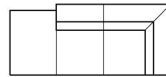
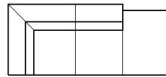
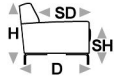


↑ fold following the dotted line ↑

simon (cal 216)



L Length - H Height - D Depth - SH Seat Height - SD Seat Depth



dimensions

L 94
H81 D94 SH45 SD55

L 213
H81 D94 SH45 SD55

L 213
H81 D94 SH45 SD55

L 112
H81 D94 SH45 SD55

L 101
H81 D94 SH45 SD55

version code

040

043

044

100

110

Description

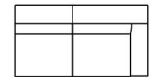
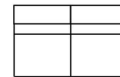
square corner

sq.cor.chr.sq.mer.
rig.fac.

sq.cor.chr.sq.mer.le
fac.

chair

1 right arm
facing chair



L 101
H81 D94 SH45 SD55

120

1 left arm facing
chair

L 75
H81 D94 SH45 SD55

130

chair without
armr.

L 172
H81 D94 SH45 SD55

200

2 seater

L 202
H81 D94 SH45 SD55

240

2 1/2 seater

L 150
H81 D94 SH45 SD55

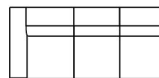
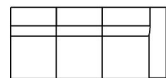
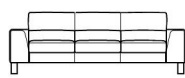
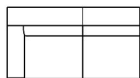
243

2 1/2 seater with
no armrests

L 176
H81 D94 SH45 SD55

251

1 right arm fac.2
1/2 str



L 176
H81 D94 SH45 SD55

252

1 left arm fac. 2
1/2 str

L 232
H81 D94 SH45 SD55

346

3/3 seater

L 206
H81 D94 SH45 SD55

347

1right arm facing
3/3 str

L 206
H81 D94 SH45 SD55

348

1left arm facing
3/3 str

L 97
H40 D97 SH- SD-

560

big ottoman

↓ fold following the dotted line ↓

